



BARRIER PEDESTRIAN LT2

The Pedestrian LT2 barrier designates safe routes in warehouses and production areas, protecting pedestrians and stopping forklift forks. Made of reinforced polymer, it is resistant to weather, chemicals, and corrosion, highly fire-resistant, non-toxic, and HACCP-compliant. Its flexibility ensures long-lasting aesthetics and durability.

The products are tested by the TÜV Rheinland unit and have been certified for safety.



Application:

Designation of pedestrian paths, protection of pedestrians



19 200 Joules



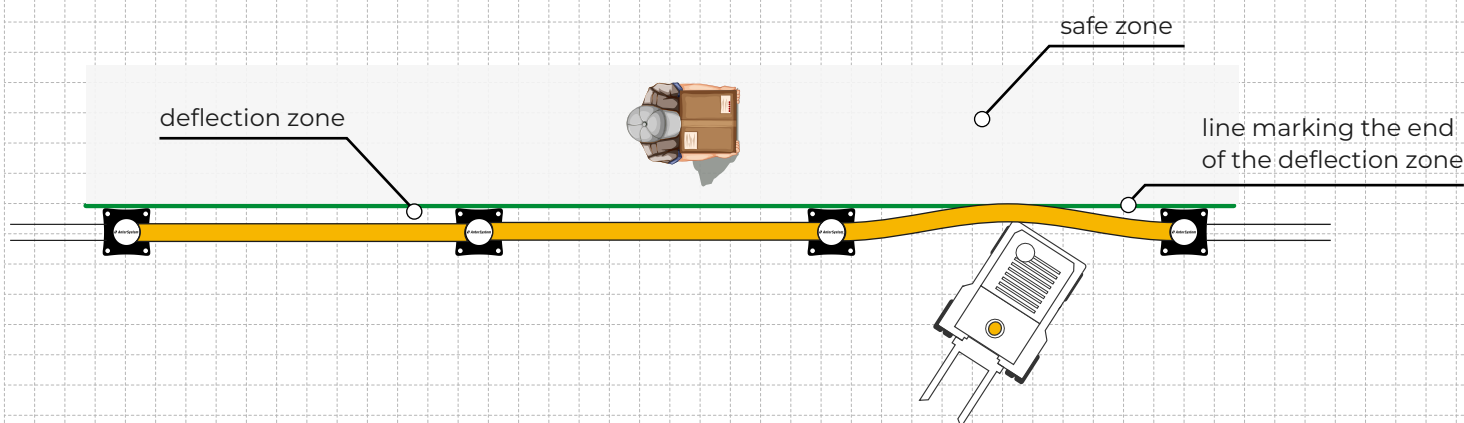
$$\frac{1}{2} \text{ MASS (kg) } \times \text{ SPEED}^2 \text{ (m/s)} = \text{ STRENGTH IN JOULES }$$

MATERIAL PROPERTIES

DATA

Temperature range	-35°C to +60°C
Special version for freezer rooms	On request
Fire class	HB
Completely non-flammable version V0	On request
Toxicity	No risk
Meets requirements	HACCP, FDA
Corrosion resistance	High
Biodegradability	Yes, 100%

Recommended producer's inspection **every 12 months**



Material	Polymeric material
Dimensions	Width: from 500 mm to 2000 mm Height: 1100 mm

FIXING

Internal Fixing M30

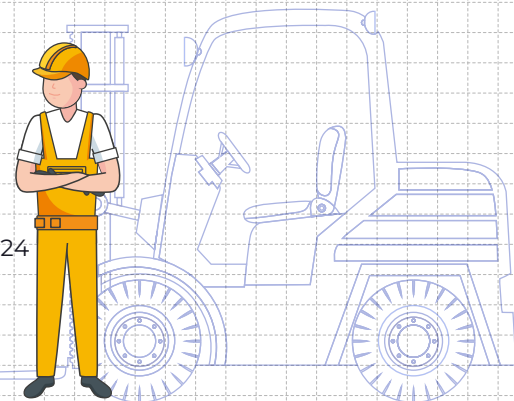
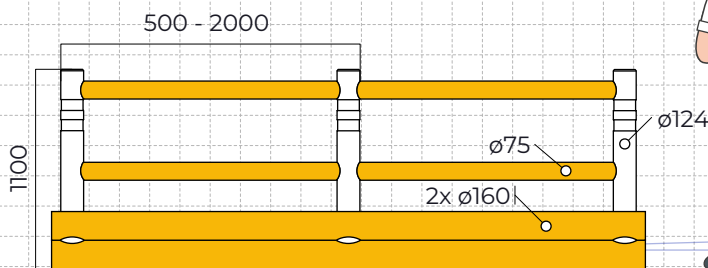
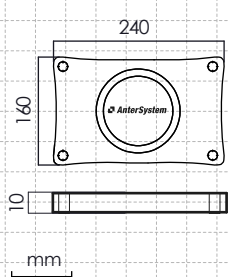


External Fixing M16



BARRIER PEDESTRIAN LT2

DIMENSIONS:



Color version



black and yellow
RAL 1003 / RAL 9005

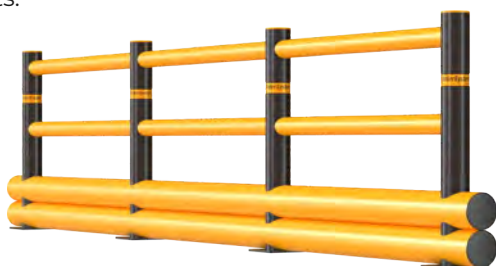
Versions of the base



stainless steel,
galvanized

Polymer strength

Thanks to innovative technology, the barriers have high strength and mechanical flexibility. The ability to bend and then return to their original shape. They retain their structure even after collision with forklifts.



An investment that pays for itself

The plastic has durable aesthetics and is resistant: to chemicals, humidity, UV, scratches. Barriers do not require cyclic painting and help save money on maintenance.

Ergonomic shape

No sharp edges that affect the risk of damage to pedestrians and vehicles.

Safe for food

The barriers are waterproof and easy to clean. They are ideal for warehouses storing frozen food and other demanding environments with sanitary rigors.



Without destroying the floor

The deflection of the barrier takes up most of the impact energy, and it no longer affects the anchorage as much. The anchorage remains stable, and in the event of a strong impact, it behaves in such a way that the floor cracks less as a result.

Dedicated to the food industry

Internal fixing

It works well in environments requiring the highest standards of hygiene (fastening hidden in the pole). The connecting elements of the barrier are hidden from corrosion. It also allows maximum adaptation to the space, even if where the fasteners are close to each other or close to the edges.

Well-suited quality

External fixing

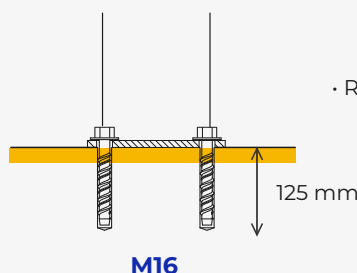
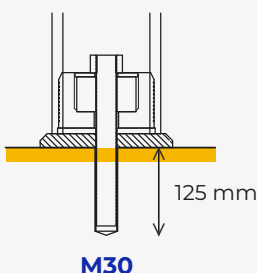
The lack of expansion required for anchoring guarantees low risk of damage to the substrate and makes the fastener ideal for installations near edges and adjacent anchors. It also works well in temporary conditions - it can be completely dismantled without damaging the floor.

Weather resistant galvanizing / stainless steel galvanizing

Recommended for:

- C25 cracked concrete
- C30 cracked concrete

Most resistant to very high loads, including dynamic: vibration, vibration



Recommended for:

- Non-cracked concrete / Cracked concrete C20/25-C50/60
- Reinforced, unreinforced concrete

High performance in cracked uncracked concrete



Barriers with reinforced strength

From the need to adapt to the dynamics of the space, the HD+ version of the product was created, different from its basic version. It is characterized by a stronger structure, mounting, larger profile diameter and correspondingly increased impact resistance of the walls.



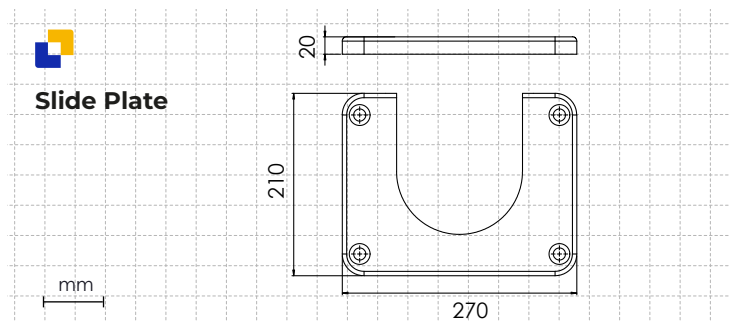
Modularity

Pedestrian barriers can be freely combined with other types of Anter System barriers, both in terms of height and purpose. Modularity allows them to be freely: combined, moved, expanded or adapted to changing conditions in warehouses and on production lines.



Additional mounting options

Slide Plate makes it possible to extend the barrier, in an area where it is necessary to maintain access to certain zones. For example: access to machinery, switchgear for maintenance work.



Biodegradability

The products were created in accordance with the philosophy of caring for the environment. They are 100% reusable for barrier production. With the future of our planet in mind, production processes are based on CSR and ESG principles.

Reducing the carbon footprint

By using flexible barriers, you support your company's environmental and ESG strategy.



Effectively reduce CO₂ emissions

5x less than the production of steel barriers



You support appropriate energy consumption

polymer materials yield twice the amount of product from 1 t of raw material (comparing with steel ones)



You reduce the generation of waste associated with the production process



Flexible barriers weigh less than steel ones. Lightweight shipments support reduced fuel consumption during transportation, reduced greenhouse gas emissions and more environmentally friendly logistics operations.

COMPREHENSIVE SECURITY FEATURES

Column protection visible to the driver, adapted to the shape of the infrastructure and the height of the vehicles



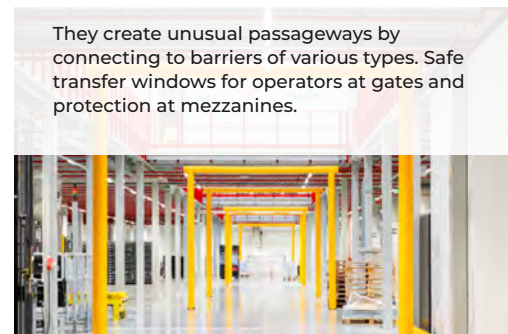
RAL4 COLUMN PROTECTION

Protective posts with a reinforced structure and a base that stably withstands the force of pressure. Safeguards that allow access to technical equipment.



SHOCKPROOF BOLLARD PA

They create unusual passageways by connecting to barriers of various types. Safe transfer windows for operators at gates and protection at mezzanines.



GATE PROTECTOR BARRIER