



## SAFETY

# SLIDE GATE R3

It was designed to ensure maximum safety for pedestrians and to improve logistics in industrial facilities. It opens and closes with a sliding leaf, hiding partially in the barrier structure. It will find application in places where it is impossible to open the gate leaf in the traditional sense.

The products are tested by the TÜV Rheinland unit and have been certified for safety.



### Application:

logistic organization in industrial facilities

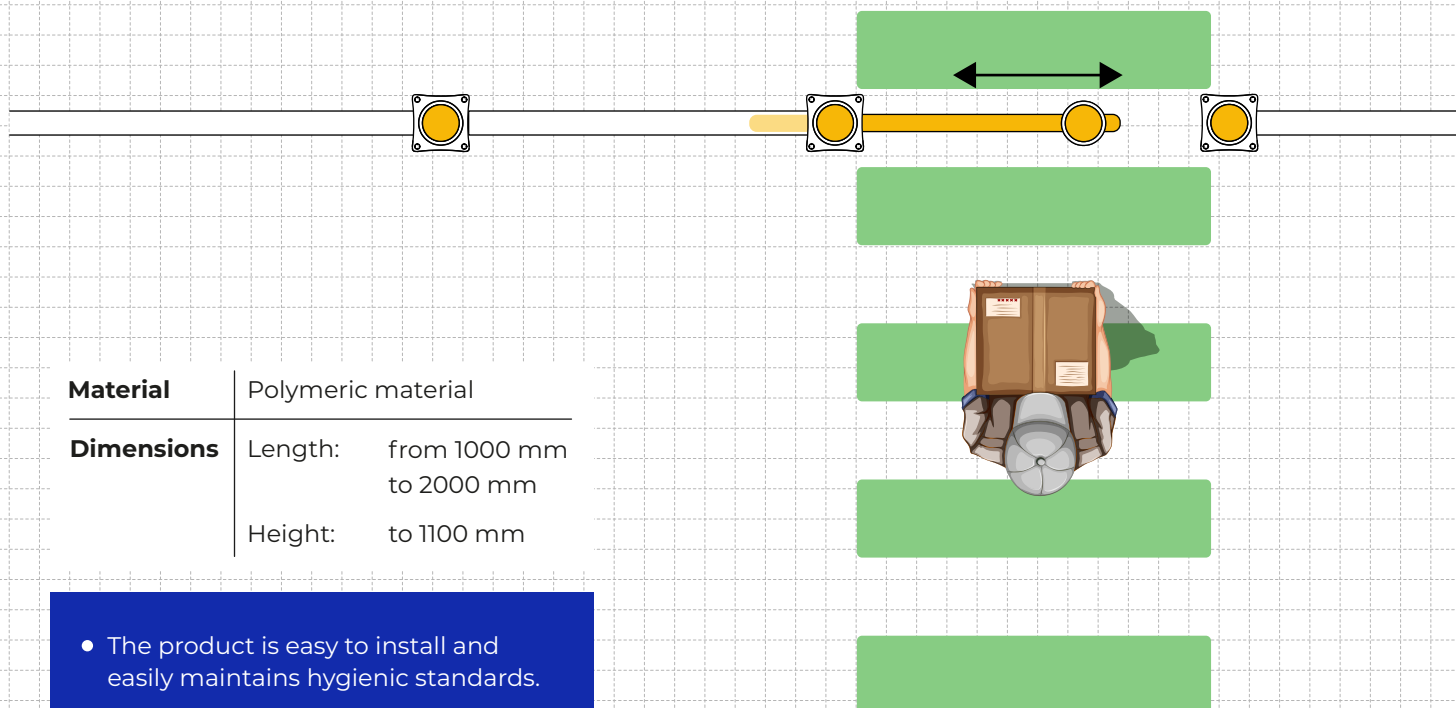


### MATERIAL PROPERTIES

### DATA

Temperature range	-35°C to +60°C
Special version for freezer rooms	On request
Fire class	HB
Completely non-flammable version V0	On request
Toxicity	No risk
Meets requirements	HACCP, FDA
Corrosion resistance	High
Biodegradability	Yes, 100%

Recommended producer's inspection **every 12 mths**



<b>Material</b>	Polymeric material
<b>Dimensions</b>	Length: from 1000 mm to 2000 mm
	Height: to 1100 mm

- The product is easy to install and easily maintains hygienic standards.

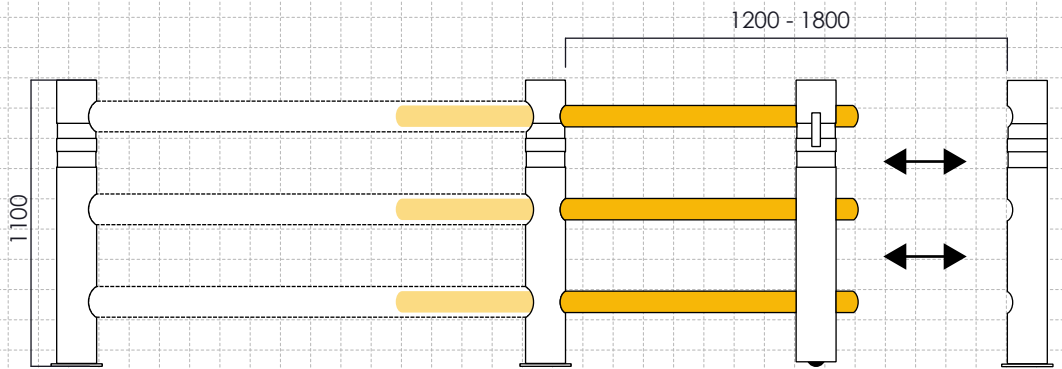


### Biodegradability

The products were created in accordance with the philosophy of caring for the environment. They are 100% reusable for barrier production. With the future of our planet in mind, production processes are based on CSR and ESG principles.

## DIMENSIONS:

mm

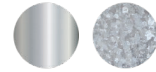


## Color version



black and yellow  
RAL 1003 / RAL 9005

## Versions of the base



stainless steel  
galvanized



## Polymer strength

Thanks to innovative technology, rack bumpers have high strength and mechanical flexibility. The ability to bend and then return to their original shape. They retain their structure even after collision with forklifts.

## An investment that pays for itself

The plastic has durable aesthetics and is resistant to: chemicals, humidity, UV, scratches. Rack bumpers do not require cyclic painting and help save money on maintenance.

## Ergonomic shape

No sharp edges that affect the risk of damage to pedestrians and vehicles.

## Reducing the carbon footprint

By using flexible barriers, you support your company's environmental and ESG strategy.

Flexible barriers weigh less than steel ones. Lightweight shipments support reduced fuel consumption during transportation, reduced greenhouse gas emissions and more environmentally friendly logistics operations.



### Effectively reduce CO<sub>2</sub> emissions

5x less than the production of steel barriers



### You support appropriate energy consumption

polymer materials yield twice the amount of product from 1 t of raw material (comparing with steel ones)



### You reduce the generation of waste associated with the production process



## COMPREHENSIVE SECURITY FEATURES

Column protection visible to the driver, adapted to the shape of the infrastructure and the height of the vehicles



**RAL5 COLUMN PROTECTION**

Protective posts with a reinforced structure and a base that stably withstands the force of pressure. Safeguards that allow access to technical equipment.



**SHOCKPROOF BOLLARD PA**

They work well in an area with very high traffic and a high risk of collisions involving medium and heavy warehouse vehicles.



**TRAFFIC BARRIERS**